

**ACTIVITIES
OF
ODISHA STATE SEEDS
CORPORATION LIMITED**



**A GOVERNMENT OF ODISHA UNDERTAKING
SANTARAPUR, BHUBANESWAR-751002**

The Corporation was incorporated on 24th February, 1978 under the Companies Act 1956

Objectives

- **To implement National Seeds Programme for State seed Project .**
- **To undertake production of Certified seeds .**
- **To process certified seeds on scientific and commercial lines.**
- **To install, manage and operate processing plants and seed storage facilities.**
- **To make arrangements for supply of foundation seeds to growers share holders**
- **To undertake distribution of seeds to farmers at reasonable prices both through Govt. agencies as well as own outlets and to supply in sufficient quantities to support Agricultural Production programme.**

PRESENCE IN THE STATE

- The Registered Office of the Company is situated at

Santrapur, Bhubaneswar -751002

- Regional Offices located at and area of operation of the same are

BALASORE (04) Balasore, Bhadrak, Keonjar & Mayurbhanja.

BARGARH (05) Bargarh, Deogarh, Sambalpur, Jharsuguda,
Sundergarh.

BHAWANIPATNA(04) Kalahandi, Nuapada, Bolingir & Sonpur

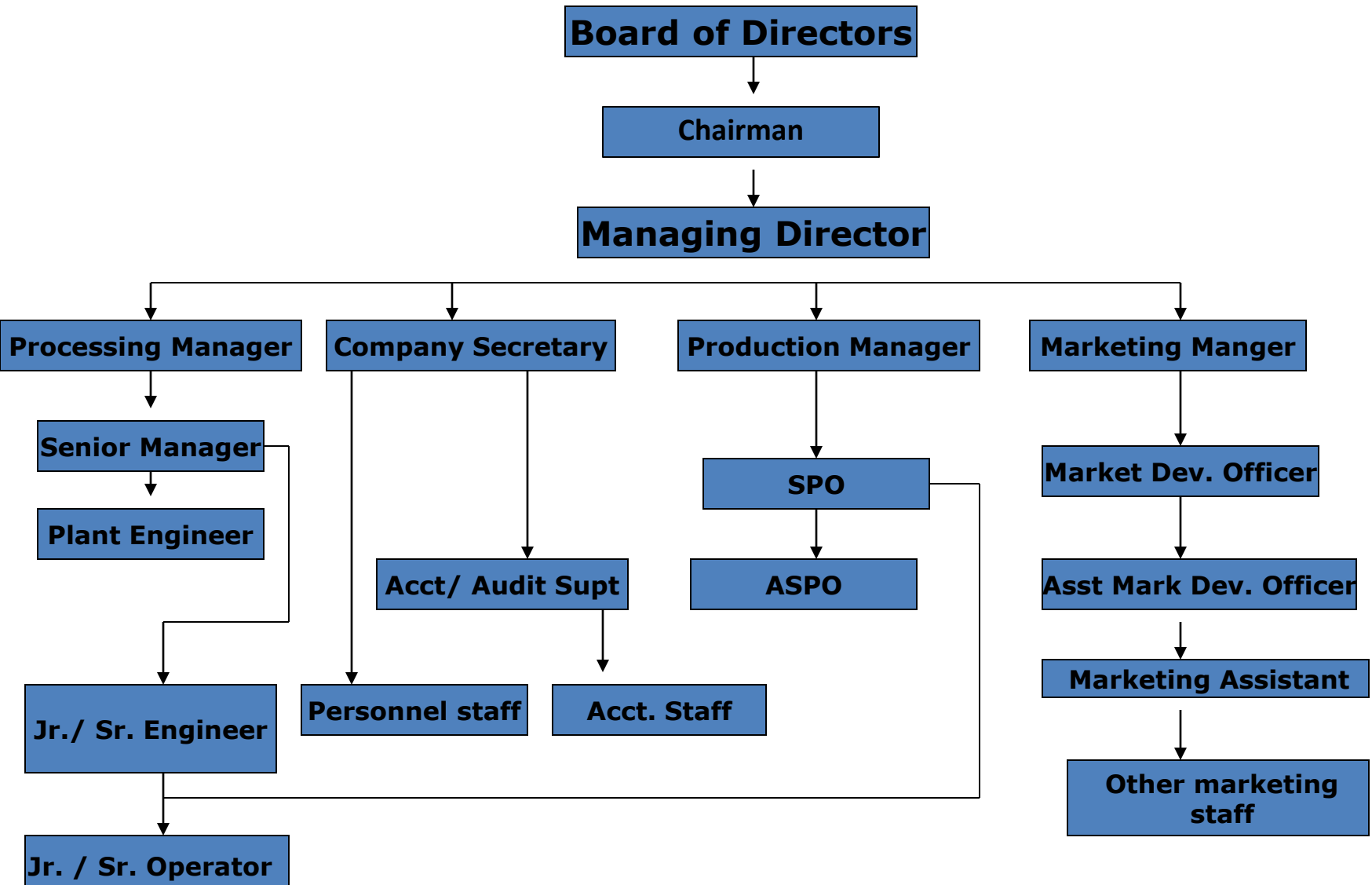
BERHAMPUR(04) Ganjam, Gajapati, Khandamal & Boudh

CUTTACK (06) Cuttack, Jagatsingpur, Jajpur, Kendrapara,
Dhenkanal & Anugul.

BHUBANESWAR(03) Puri, Khurda & Nayagarh.

JEYPORE (03) Koraput, Rayagada, Malkangiri & Nabarangpur.

Organizational Chart



MAN POWER

Table:1

Head/Branch offices of OSSC	Types of employees
Head Office Bhubaneswar	43
Seed Production Unit, Cuttack	14
Seed Production Unit, Bargarh	21
Seed Production Unit, Berhampur	14
Seed Production Unit, Balasore	13
Seed Production Unit, Jeypore	08
Seed Production Unit, Bhawanipatna	06
Seed Production Unit, Bhubaneswar	13
Total	132

PRESENT SANCTIONED STRENGTH-186

Major crops of Odisha, Area, Production and Productivity

S. N.	Crop	Area ('000 ha)	Production (in '000 MT)	Productivity (kg/ha)
Cereal Crops				
1.	Rice	4455	6916	1553
2.	Wheat	20	30	1520
3.	Ragi	183	164	896
4.	Maize	224	514	2291
5.	Bajra	3	2	604
Pulses				
7.	Green gram	756	342	452
8.	Black gram	607	276	455
9.	Pea	26	19	715
10.	Lentil	13	7	535
11.	Bengal Gram	38	25	663
Horticultural crops				
12.	Potato	12	169	13
13.	Onion	31	299	9
14.	Garlic	11	35	3
15.	Okra	73	640	9
Oil seed crops				
16.	Sesame	299	128	429
17.	Groundnut	256	458	1791
18.	Mustard	109	42	383

Source: Agriculture statistics, Govt. of Orissa 2008-09

Table 6 : Allotment and lifting of Paddy (B) seeds from 2008-09 to 2013-14 (in q).

Crop	2008-09		2009-10		2010-11		2011-12		2012-13		2013-14 (ongoing)	
	Allotted	Lifted	Allotted	Lifted	Allotted	Lifted	Allotted	Lifted	Allotted	Lifted	Allotted	Lifted
Paddy	133.60	447.48	283.30	433.90	383.77	448.60	549.20	502.91	826.70	1018.14	438.60	475.80
Ragi	0.00	0.15	0.00	0.10	0.00	0.00	0.00	1.00	0.00	0.00	0.00	0.00
Mung	5.00	5.53	1.15	14.71	7.61	26.46	12.82	23.73	39.50	27.07	33.73	27.95
Biri	6.20	4.65	2.58	16.97	2.00	13.15	15.08	16.61	44.38	43.75	38.64	44.54
Arhar	2.00	2.30	0.00	9.20	0.00	4.22	0.00	6.52	1.50	2.80	0.00	3.10
Gram	12.75	12.44	2.00	2.20	1.20	1.20	1.50	0.90	3.80	3.30	NA	NA
Lentil	0.02	0.02	0.20	0.00	0.22	0.31			0.30	0.32	NA	NA
F. Pea	0.00	0.00	0.80	1.22	2.20	3.64	2.50	2.50	2.20	2.20	NA	NA
G.nut	754.00	453.90	137.50	636.52	926.00	898.40	1327.60	710.45	1270.00	1178.30	419.00	331.65
Niger	0.30	0.10	0.10	0.15	0.00	0.10	0.22	0.22	2.00	0.00	0.00	0.00
Sesamum	0.10	0.20	0.20	0.15	0.10	0.10	0.43	1.13	1.71	2.01	0.10	0.10
Mustard	0.53	0.48	0.30	0.30	0.30	0.70	1.25	1.60	0.50	1.70	NA	NA
Jute	0.15	0.15	0.15	0.20	0.55	0.55	0.48	0.44	0.28	0.28	0.42	0.42
TOTAL		927.40	428.28	1115.62	1323.95	1397.43	1911.08	1268.01	2192.87	2279.87	930.49	883.56

Table 7 : Production of Paddy (F) seeds from 2008-09 to 2012-13 (in q).

Crop	2008-09		2009-10		2010-11		2011-12		2012-13	
	Quantity of seeds utilized(B)	Quantity of seeds derived(F)	Quantity of seeds utilized(B)	Quantity of seeds derived(F)	Quantity of seeds utilized(B)	Quantity of seeds derived(F)	Quantity of seeds utilized(B)	Quantity of seeds derived(F)	Quantity of seeds utilized(B)	Quantity of seeds derived(F)
Paddy	178.85	7084.8	193.5	6293.5	100.6	4904.2	154.38	7800	151.4	7921
Ragi	0.15	10.27	0.1	12.9	0.1	10	0.9	45	0.2	10
Mung	5.32	12.15	14.71	353.04	28.16	412.04	22.1	530.4	9.03	216.72
Biri	3.82	58.1	16.97	414.1	13.15	220.76	15.99	479.7	3.6	108
Arhar	0.2	5.02	4.15	45	4.22	211	4	200	0.6	25
Gram	0	0	2.2	22	1.2	12	0.9	9	3.3	33
Lentil	0	0	0	0	0	0	0	0	0.17	4.25
F. Pea	0	0	1.22	24.4	3.64	25	2.5	50	0.3	3
G.nut	500.1	3024.9	636.51	3503.2	881.8	1925.5	739.55	2355.45	1000	4127.7
Niger	0.1	5.07	0.15	10	0.1	6.5	0	0	0	0
Sesamum	0.2	0.38	0.15	6	0	0	0.87	43.5	0.35	17.5
Mustard	0.38	18.96	0.3	30	0.5	72	1	100	0.3	30
Jute	0.1	0	0.2	0	0.55	16.5	0.44	23	0.28	8.4
Total	689.22	10219.65	870.16	10714.14	1034.02	7815.5	942.63	11636.05	1169.53	12504.57

Table 8 : Production of Paddy (C) seeds from 2008-09 to 2012-13 (in q).

Crop	2008-09		2009-10		2010-11		2011-12		2012-13	
	Quantity of seeds utilized(F)	Quantity of seeds derived(C)	Quantity of seeds utilized(F)	Quantity of seeds derived(C)	Quantity of seeds utilized(F)	Quantity of seeds derived(C)	Quantity of seeds utilized(F)	Quantity of seeds derived(C)	Quantity of seeds utilized(F)	Quantity of seeds derived(C)
Paddy	10206.6	403178.2	10786.4	431312	9351	481085	11080.6	520493	9600.5	450710
Ragi	9.1	104.2	11.2	36.6	6.5	8.4	0	0	5	0
Mung	59.38	290.94	126.82	421.65	288	2397	434.8	4284	591	800
Biri	65.7	346.6	149.5	524.33	327.84	2886	358.4	4149	465	1100
Arhar	1.2	1.84	13.88	0	30	2.2	36.4	21	0	0
Gram	0	0	1	0	7.2	0	0	0	12.4	0
Lentil	0	0	0	0	0	0	0	0	0	0
F. Pea	0	0	21.12	0	3.2	19.4	0	0	8.4	0
G.nut	2170	33429.8	2140.9	53899.9	18029	47573	20812	24415	9293.5	16426.2
Niger	2.1	5.18	3	0	2	0	4	0	6	0
Sesamum	0.23	0	1.7	2.36	9.2	14.6	20	0	0.5	0
Mustard	18.24	524.22	18.71	810	45.4	1091	43.5	1046	41.72	1600
Jute	0	0	0	0	0	0	0	0	0	0
Total	12532.55	437880.98	13274.23	487006.84	28099.34	535076.6	32789.7	554408	20024.02	470636.2

Table 9 : Indent and Supply of seeds during Kharif -2012 (in q.)

Crops	Indent by DA &FP (in q)	SOURCE-WISE SUPPLY				
		Inside Stock (in q)		Outside Stock (in q)		Total (in q)
		OSSC	Private growers	SFCI	APSSDC	
Paddy	672204.00	353484	115000.00	2688	0.00	471523.50
Maize	160.00	0.00	0.00	0.00	0.00	0.00
Moong	2268.50	258.04	0.00	0.00	0.00	489.76
Biri	2686.50	359.48	0.00	0.00	0.00	990.34
Arhar	812.80	115.00	0.00	120.80	0.00	377.14
Groundnut	15634.00	8113.00	0.00	2688.00	0.00	11544.90
Jute	310.20	0.00	0.00	0.00	295.94	308.06
Dhanicha	4076.00	0.00	0.00	2699.25	0.00	2774.65
Niger	3.60	0.00	0.00	0.00	0.00	2.16
Sunhemp	562.50	0.00	0.00	0.00	0.00	480.30
Total	698152.00	362330.00	115000.00	8196.05	295.94	488490.81

Table 10 : Indent and Supply of seeds during Kharif -2013 (in q.)

Crops	Indent by DA &FP (in q)	SOURCE-WISE SUPPLY					
		Inside Stock (in q)		Outside Stock (in q)		Total (in q)	Total Supply as on 21.07.2013
		OSSC	Private growers	SFCI	HACA		
Paddy	659622.50	384062.00	32000.00	0.00	0.00	416062.00	392907.70
Maize	219.03	0.00	0.00	0.00	0.00	0.00	0.00
Ragi	211.08	36.00	0.00	0.00	0.00	36.00	21.40
Moong	2032.50	150.00	0.00	0.00	0.00	150.00	38.40
Biri	2598.80	350.00	0.00	0.00	0.00	350.00	2.40
Arhar	984.70	0.00	0.00	0.00	0.00	0.00	0.00
Groundnut	12604.90	6457.55	0.00	0.00	0.00	6457.55	5000.40
Sesamum	112.80	0.00	0.00	0.00	0.00	0.00	0.00
Jute	255.60	0.00	0.00	0.00	255.55	255.55	174.81
Dhanicha	4066.50	0.00	0.00	4066.50	0.00	4066.50	3919.19
Niger	152.40	44.40	0.00	0.00	0.00	44.40	5.00
Sunhemp	20.00	0.00	0.00	0.00	0.00	0.00	0.00
Total	682880.81	391099.95	32000.00	4066.50	255.55	427422.00	402069.30

Table 11: Arrangement of seeds for Supply of during Rabi, 2012-13 (in q).

Crop	Indent by DA &FP (in q)	OSSC	NSC	SFCI	APSSDC	KSSC	RSSC	UPSDC	Total	Can be made through Tender Process
Paddy	56443.60	101833.00	2450	0.00	7050.00	35150	0.00	0.00	146483	0.00
Wheat	6697.20	0.00	0.00	7000	0.00	2000	0.00	0.00	9000	0.00
Maize	27.70	0.00	0.00	0.00	0.00	0.00	0.00	0.00	0.00	27.70
Ragi	1.00	0.00	0.00	0.00	0.00	2000	0.00	0.00	2000	1.00
Moong	5170.30	3996.00	2104	1290	0.00	0.00	4500	0.00	11890	3444.10
Biri	9371.04	3578.00	1547	5360	5000.00	2000	0.00	1178	18663	4980.52
Gram	1126.00	0.00	0.00	520	0.00	0.00	0.00	0.00	520	675.80
F. Pea	2155.50	9.60	0.00	600	0.00	0.00	0.00	0.00	609.60	1555.50
G.Nut	121316.80	22170.00	0.00	100416	6500.00	5000	0.00	0.00	134086	20614.80
Mustard	2942.82	1033.00	0.00	450	0.00	0.00	0.00	0.00	1483	1552.32
Til	218.20	0.00	0.00	200	0.00	0.00	0.00	0.00	200	79.50
S.Flower	217.20	0.00	0.00	200	0.00	0.00	0.00	0.00	200	67.40
Bajra	0.00	0.00	0.00	0.00	0.00	3900	0.00	0.00	3900	0.00
Total	205687.40	132619.6	6101	116036	18550.00	50050	4500	1178	329034.6	32998.64

Table 12: Indent & Supply of different Seeds from 2005-06 to 2013-14 (in q).

Year	Paddy		Non- Paddy		Total		
	Indent	Supply	Indent	Supply	Indent	Supply	%
2005-06	311831.00	188826.00	77111.00	65775.00	500657	265937	53.11
2006-07	235595.00	223962.00	100021.00	94566.00	459557	323983	70.50
2007-08	325398.00	271927.94	122425.00	100997.94	597326	394353	66.02
2008-09	478234.00	408116.89	140890.00	113701.89	886351	549007	61.94
2009-10	678836.00	581245.72	173964.00	135339.72	1260082	755210	59.93
2010-11	643429.00	579740.96	149131.00	134156.96	1223170	728872	59.59
2011-12	738935.00	613341.00	175885.00	143044.00	1352276	789226	58.36
2012-13	900011.24	592293.16	171363.64	120660.66	1492304	763657	51.17
2013-14 (Continuing)	911243.55	402069.30	183060.95	9161.60	1313313	585130	

Reasons for low achievement by Dealers Network :

OSSC is not able to achieve the targeted sale through Dealer Network due to following reasons:-

- Cumbersome process of documentation.
- Non lucrative Dealer' margin.
- Lack of proper storage facilities at dealers level to handle seed business.

Table : 13 Details of Processing Plants used by OSSC (1)

SPO Zone	District	Location	Plant belongs to	Capacity in Tons/hr.
Berhampur	Ganjam	Berhampur	OSSC	4
	Boudh	Paljhar	OSSC	4
	Ganjam	Aska	OSSC	2
	Ganjam	Bhanjanagar	Govt.	2
	Gajapati	P' khemundi	Private	2
	Total			
Balasore	Balasore	Balasore	OSSC	4
	Bhadrak	Bhadrak	OSSC	2
	Mayurbhanj	Dhanapana	OSSC	2
	Keonjhar	Gohira	OSSC	2
	Keonjhar	Keonjhar	OSSC	2
	Baripada	Dhamnagar	Govt.	2
	Baripada	Sanjukta Seeds	Private	2
	Total			

Table : 13 Details of Processing Plant used by OSSC (2)

SPO Zone	District	Location	Plant belongs to	Capacity in Tons/hr.
Bargarh	Bargarh	Bargarh	OSSC	10
	Sundargarh	Sundargarh	OSSC	4
	Deogarh	Deogarh	OSSC	2
	Sambalpur	Sambalpur	OSSC	2
	Bargarh	Barikel	OSSC	4
	Sundargarh	Bargaon	Govt.	2
	Bargarh	Kuchinda	OSSC	2
Bhawanipatna	Nuapara	Nuapara	OSSC	4
	Kalahandi	B' patna	OSSC	4
	Bolangir	Bolangir	Govt.	2
	Bolangir	Patnagarh	Govt.	2
	Total			

Table :14 Details of Processing Plant used by OSSC (3)

SPO Zone	District	Location	Plant belongs to	Capacity in Tons/hr.
Cuttack	Cuttack	Cuttack	OSSC	4
	JS pur	Nimakana	OSSC	2
	Jajpur	Jajpur Road	OSSC	2
	Kendrapara	Kendrapara	OSSC	4
	Dhenkanal	CS Agro tech	Private	2
BBSR	Khurda	Chandaka	OSSC	2
	Khurda	Santarapur	OSSC	4
	Khurda	Satasankha	OSSC	4
Jeypore	Koraput	Randapali	OSSC	4
	Koraput	Kotpad	OSSC	2
	Rayagada	Rayagada	OSSC	2
	Malkanagiri	Mathili	OSSC	2
	Nawarangpur	Dabugaon	OSSC	2
	Nawarangpur	Umerkote	Govt.	2
	Total			

MAJOR CONSTRIANTS

WORKING CAPITAL

- The major constraint with OSSC is availability of working capital.
- The requirement of working capital during the period from November to May is around 100.00 crores for paddy seeds.
- The procurement of Kharif produce starts reaching the processing plants in the middle of October and gains its momentum from November onwards in an increasing trend till February for timely processing and testing and tagging.
- Simultaneously, Rabi produce will start reaching processing plants from January. No sooner the processing is completed and processing report is generated, the initial payment to the growers shall be paid immediately to the growers lest the farmers sale their produce to Mandis to get down payment for raw produce.
- To keep continuous flow of entire targeted quantity of procurement, it is very much essential that payment system should be in time.

Solution

- **To tide over the situation, Government is requested to create a revolving fund of Rs.100.00 crores in favour of OSSC .**

Table 18 : Profit and Loss statement from the year 2000-01 to 2012-13
(Rs. In Lakhs)

Year	Turnover	Profit before tax	Profit after tax	Cumulative profit/ Loss	Remarks
2000-01	3836.15	284.30	273.40	659.72	Audited
2001-02	4723.46	100.28	37.40	697.12	Audited
2002-03	3268.44	45.46	29.95	627.07	Audited
2003-04	3359.19	30.40	0.29	727.36	Audited
2004-05	2163.98	16.11	5.44	732.80	Audited
2005-06	3388.25	17.34	10.07	742.87	Audited
2006-07	5176.48	460.19	305.48	1048.35	Audited
2007-08	6607.88	471.31	329.77	1378.12	Audited
2008-09	8470.75	84.99	156.31	1534.43	Audited
2009-10	12715.32	119.41	23.64	1558.07	Audited
2010-11	14848.48	221.07	154.86	2128.07	Audited
2011-12	16733.46	248.72	163.89	2286.57	Provisional
2012-13	18480.07	368.46	243.22	2529.79	Provisional

HIGHLIGHTS OF OSSC LTD.

Achievement of the corporation (1)

- In 1999-2000 OSSC Ltd. had a turnover of Rs. 38.91 crores which has been increased to a turnover of Rs. 184.00 crores in the year 2012-13 which indicates that there is five fold increase in turnover.
- In comparison to 1999-2000 (2.14 lakh quintals) there is an increase of nearly **108 percentage** in production by 2011-12 (4.45 lakh quintals) with constraint of funds, human resource and limited infrastructure.
- The corporation is going to achieve self sufficiency in pulse production and it is expected to produce 10000 quintals of pulses against the indent of 4955 quintals of DA & FP.

Achievement of the corporation (2)

- Now the corporation is running in profit and by the year 2012-13 the cumulative profit comes around Rs.25.30 crores.
- For the first time after 34 years of inception of the corporation paid dividend to the tune of nearly Rs. 20 lakhs.
- The corporation is self sufficient in fulfilling the demand of brinjal and tomato seeds (High yielding open pollinated varieties) of the state.



Payment of Dividend by OSSC to Govt.

Future Planning (By 2015)

- To enhance the Seed Replacement Rate (SRR) up to 35% for which we need to produce 9.0 lakh quintals of seeds. At present we are producing 5.0lakh q of seeds.
- We are only selling 50% seeds through dealer net work which has to be increased to 100 percent by 2015.

Requirements

- The corporation is running with own capital of Rs. 2.58crores and has a loan of Rs. 40 crores. For smooth running and timely payment to the seed grower farmers of the state we need a **revolving fund of Rs.100 crores**.
- Now we have an effective **processing capacity** up to 4.0 lakh q of seeds per annum which has to be increased to 9.0lakh q of seeds/annum by the year 2015. So we have to install more number of processing plants .
- At present we have 2.0 lakh q **storage capacity** which needs to be increased to 9.0lakh quintals to accommodate process and unprocessed seeds.
- The present man power has to be increased and **restructuring** has to be done as per the suggestion of M/s Delloite ltd.

Thank you.